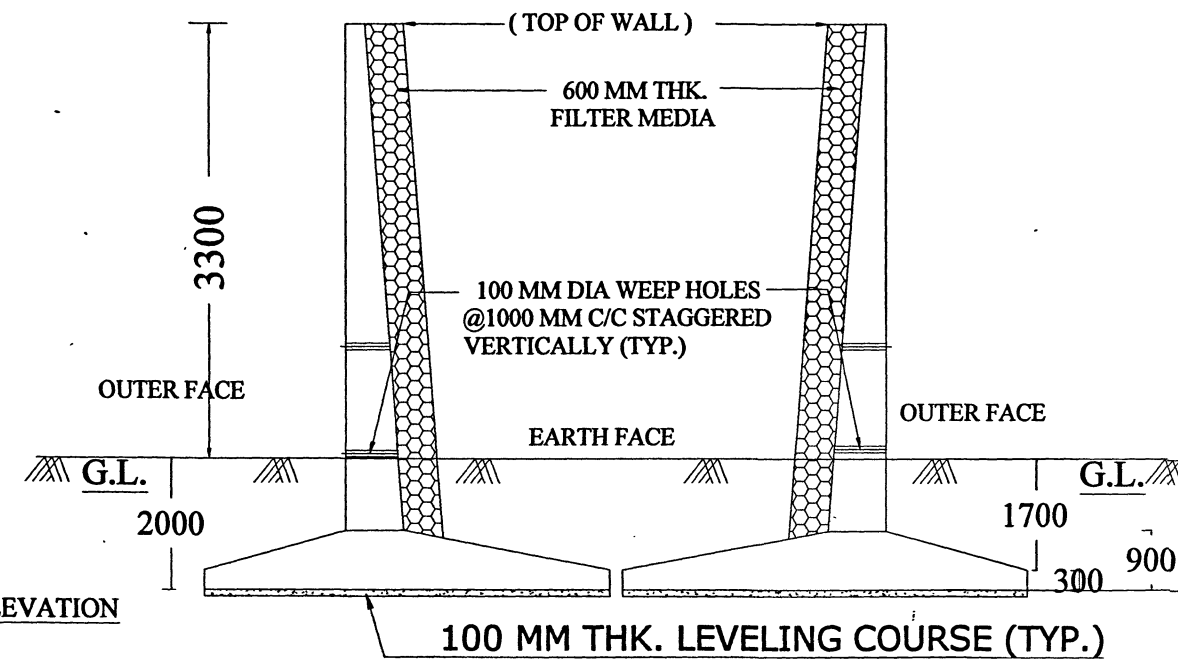
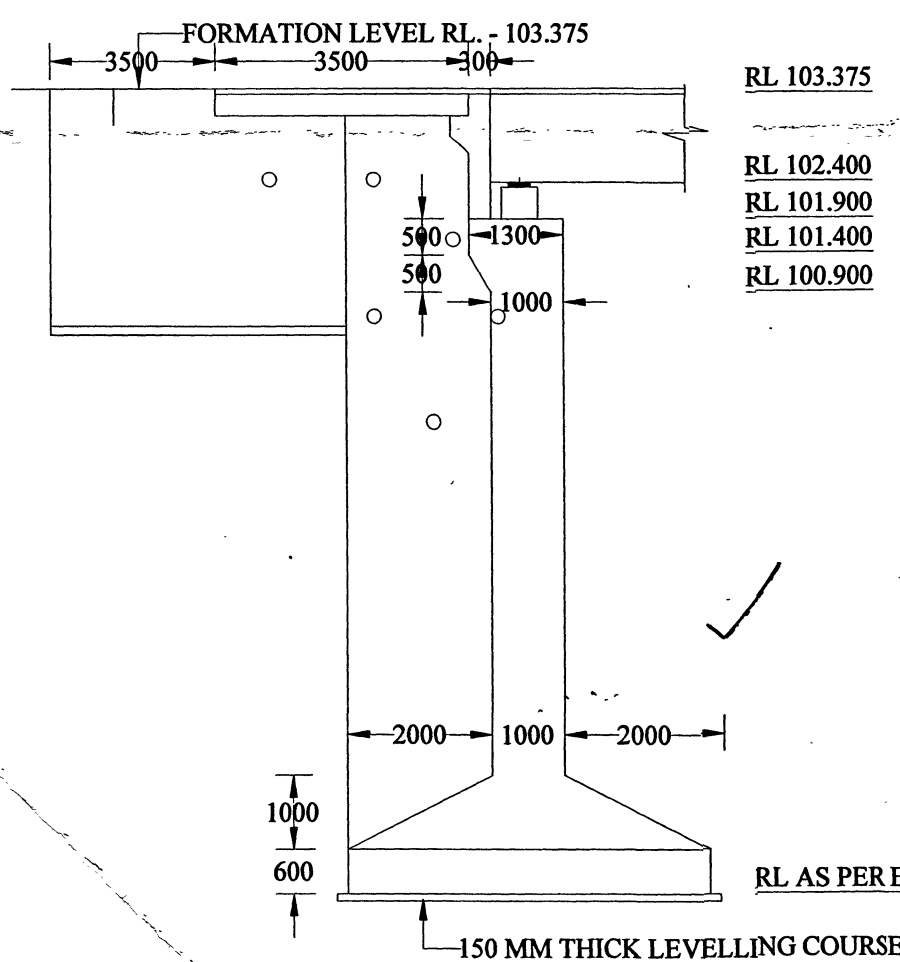
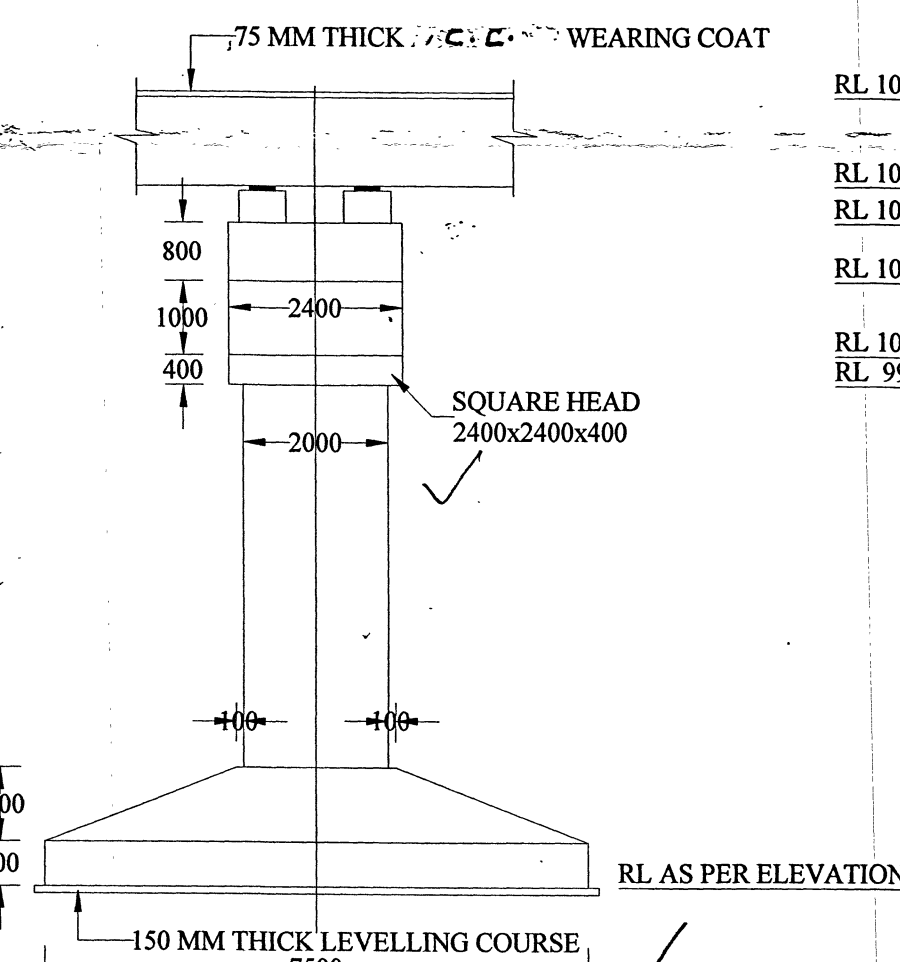


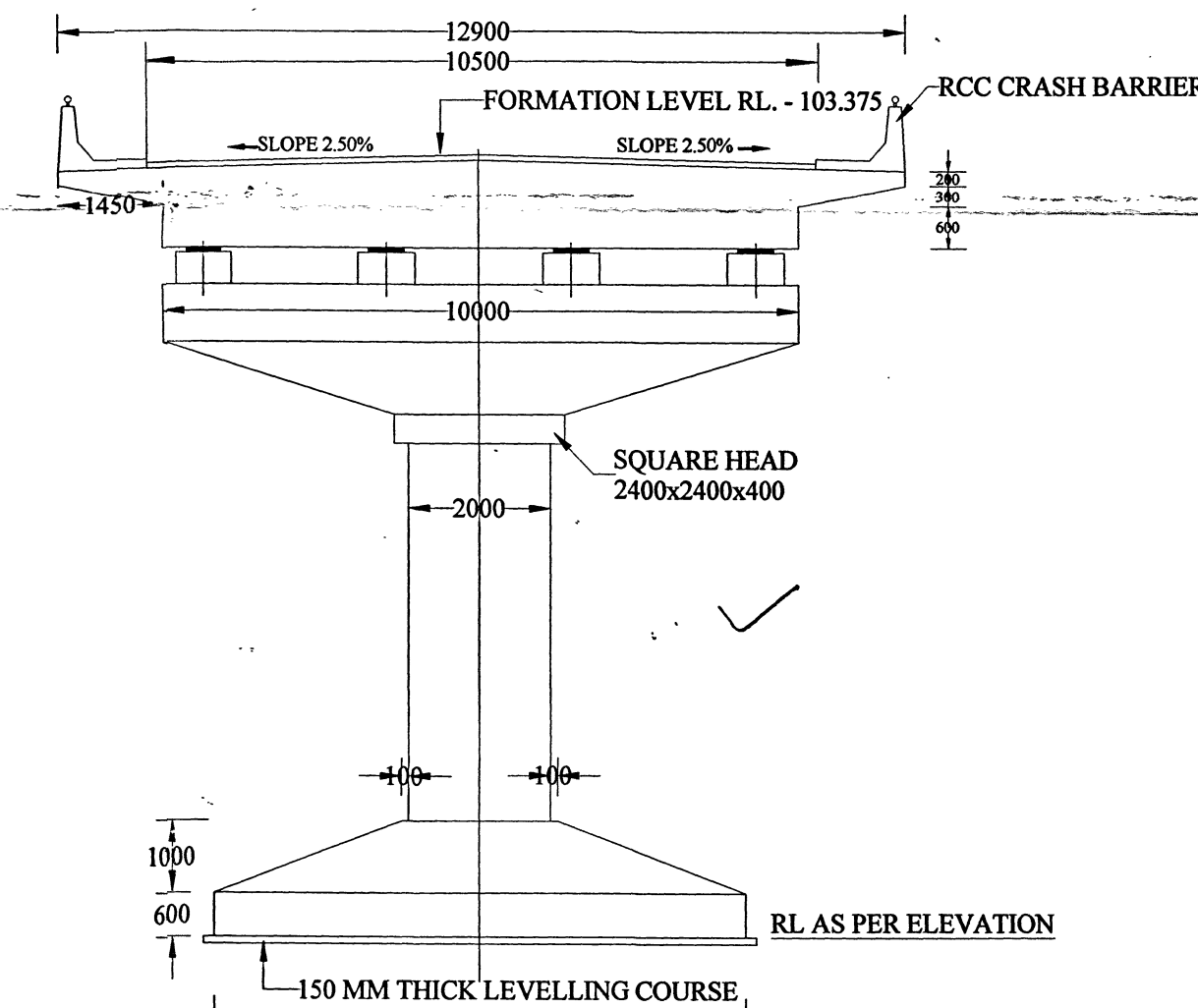
**CERTIFICATE**  
 "THIS IS CERTIFIED THAT THE BORING RESULT SHOWN ABOVE IS CORRECT."  
 S.D.O. E.E.



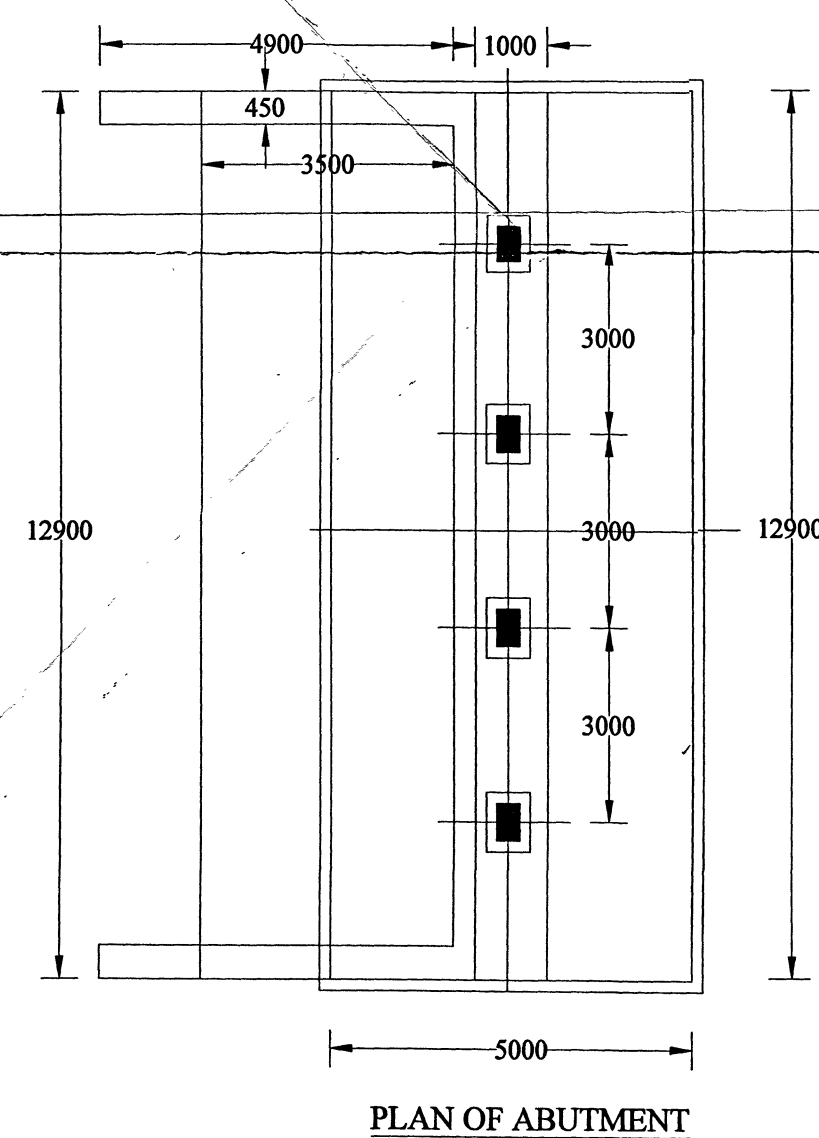
TYPICAL SECTION OF RETAINING WALL



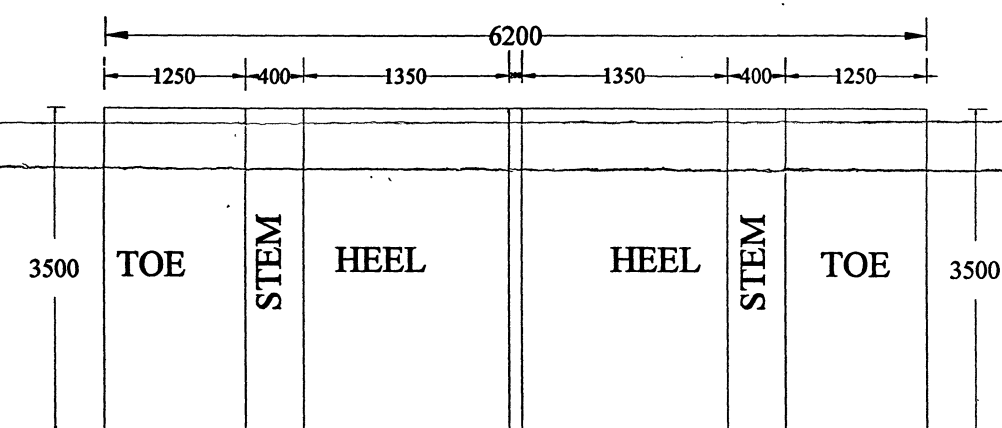
SECTIONAL ELEVATION PIER  
CURRENT DIRECTION



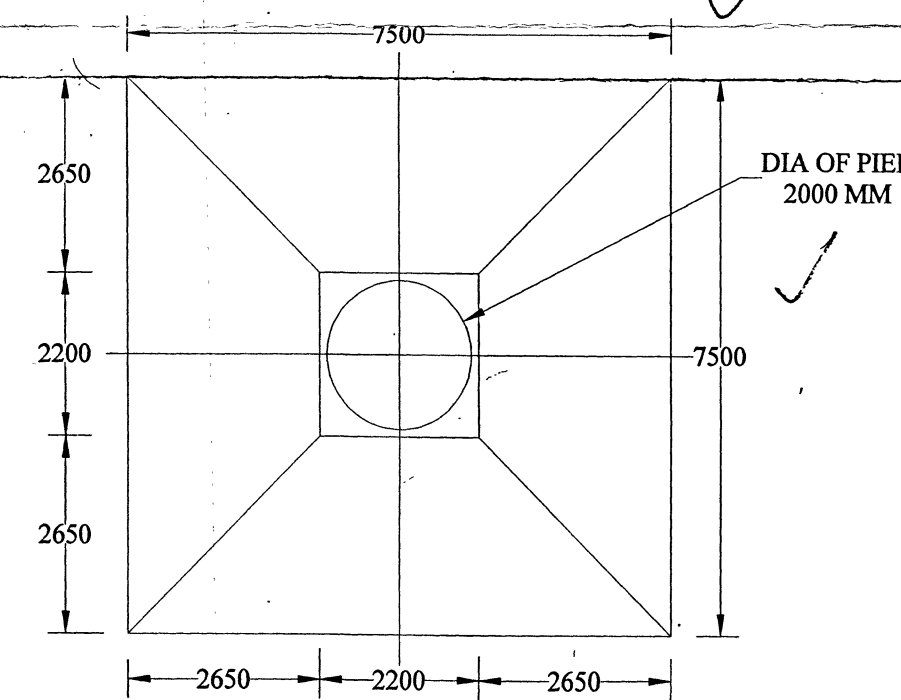
SECTIONAL ELEVATION PIER  
TRAFFIC DIRECTION



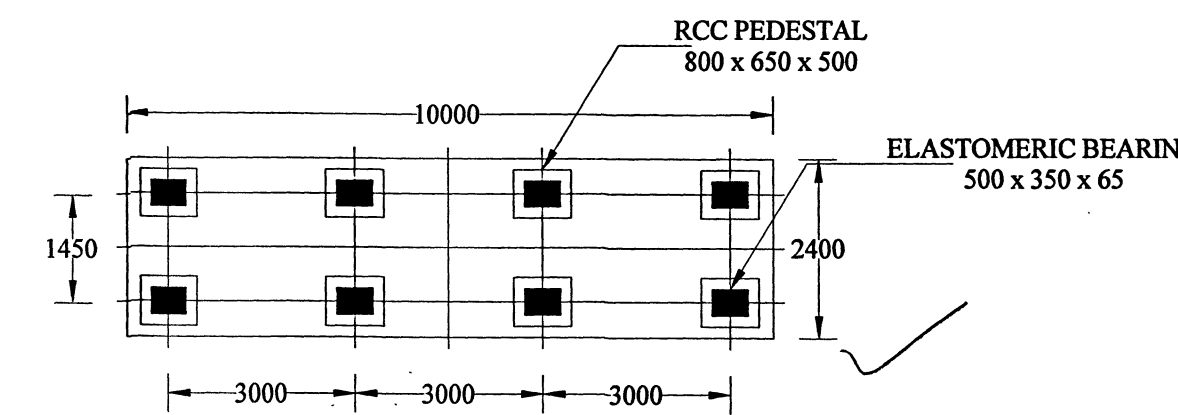
PLAN OF ABUTMENT



TYPICAL PLAN OF RETAINING WALL  
(DIMENSIONAL DETAILS)



PLAN OF FOOTING



PLAN OF PIER CAP

NOTES

1. TYPE OF BRIDGE - HIGH LEVEL BRIDGE
2. LENGTH OF BRIDGE - 60.00 M (BETWEEN FACE OF DIRT WALL)
3. OVER ALL WIDTH OF BRIDGE - 12.90 M
4. CARRIAGE WAY OF BRIDGE - 10.500 M
5. FORMATION LEVEL - RL 103.375 M
6. SOFFIT LEVEL - RL 102.400 M
7. H.F.L. - RL 101.200 M
8. L.W.L. - RL 97.950 M
9. L.B.L. - RL 97.320 M
10. CATCHMENT AREA - 31.50 SQKM
11. DESIGN DISCHRG - 283.755 CUMEC
12. DESIGN VELOCITY - 1.64 M/Sec
13. SCOUR LEVEL AT PIER - RL 95.880 M OR ROCK TOP
14. SCOUR LEVEL AT ABUT. - RL 97.830 M OR ROCK TOP
15. FOUNDATION LEVEL - ABUTMENT A1- RL 91.900, A2-RL 97.350  
PIER P1- RL 93.820, P2-RL 95.620, P3-RL 96.310
16. TYPE OF FOUNDATION - OPEN FOUNDATION.
17. TYPE OF SUB STRUCTURE - R.C.C.SOLID CIRCULAR
18. TYPE OF SUPER STRUCTURE - RCC SOLID SLAB
19. TYPE OF RAILING - RCC CRASH BARRIER AS PER MORT&H
20. TYPE OF BEARING - ELASTOMERIC BEARING
21. TYPE OF APPROACH SLAB - R.C.C.-M-30 GRADE
22. TYPE OF WEARING COAT - WEARING COAT AS PER MORT&H
23. TYPE OF EXPANSION JOINT - STRIP SEAL EXPANSION JOINTS
24. TYPE OF NAME PLATE - GRANITE PLATE
25. DESIGN LOADING - ONE LANE OF CLASS 70R FOR EVERY TWO LANES  
WITH ONE LANES OF CLASS A ON THE REMAINING  
LANE OR 3 LANE OF CLASS A.
26. SAFE BEARING CAPACITY - 50 T/SQM

S.D.O.	E.E.	S.E.	C.E.
OFFICE OF THE CHIEF ENGINEER PWD BRIDGE ZONE RAIPUR (C.G.)			
PROJECT :-	CONSTRUCTION OF HIGH LEVEL BRIDGE ACROSS BELGAL NALA IN KM. 6/6 ON MARODA-BELGAL ROAD.		
DRAWN BY	GENERAL ARRANGEMENT DRAWING		
	DRAWING NO.	DATE:	